

# Monkeyin' around on HD Ferries!

## Enjoy a day out at Durrell

Julitta and Putri from Durrell's give HD Ferries the thumbs up! On Friday 30th March, two of Durrell's famed Sumatran orang-utans successfully embarked on a journey to the continent to their new home.

Julitta and Putri (pictured bottom right) travelled with the kind help of HD Ferries to France on the Monday morning 0715 Jersey - St Malo ferry and from there they continued onto Parc Zoologique d'Amneville in the east of the country.

Amnéville Zoo has just finished a huge new exhibit for Sumatran orang-utans, which opened on the 31st March. Julitta and Putri will later be joined by a male orang-utan from Munich Zoo. Julitta was born on the 29th April 1975 at Bristol Zoo and came to Jersey in 1994. Since being here she has had two offspring, the

first Wirawan born on 15/02/1996 and the second Putri, born 16/05/2005.

Putri is being exported with her mother as orang-utans generally stay with their mother until they are 6 - 8 years old. The orang-utans trip marked a fitting start to [www.hdferrys.com](http://www.hdferrys.com) website offering Pet ferry travel on the new Channel Islands to France service.



**We're open every day of the year**  
(except Christmas Day)  
**9.30am-6.00pm** (5.00pm in Winter)

**Durrell Wildlife Conservation Trust**  
Les Augrès Manor, La Profonde Rue,  
Trinity, Jersey JE3 5BP  
Channel Islands, United Kingdom

Tel: +44 (0) 1534 860000  
Fax: +44 (0) 1534 860001  
info@durrell.org

## Durrell - a rare place



durrell wildlife conservation trust [durrell.org](http://durrell.org)

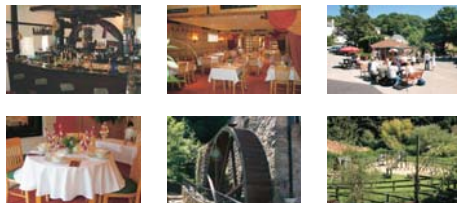
## Le Moulin de Lecq, Jersey

Le Moulin de Lecq was one of the many ancient water mills of the island and retains the name it bore 600 years ago.

Formerly a fuller's mill, with parts of the mill dating back to the 12th century, Le Moulin de Lecq is a historic landmark featuring the largest water wheel on the Island. The Germans later requisitioned the wheel to generate power for their search light batteries throughout the war years until the liberation.

In April 1955 the "mill" was granted a license, and it was decided to convert it into an "inn" of unusual character. The outside water wheel weighs 18 tons and has a diameter of 21 feet and works entirely by the weight of water as it did hundreds of years ago. Since then, the property has been run as a genuine free house serving an extensive range of real ales and beers.

A newly built restaurant now adjoins the old mill inn which has been designed in a sympathetic way to blend in with the original stone and masonry craftsmanship. Le Moulin de Lecq prides itself on its informal atmosphere and hopes to provide a welcome and relaxing change to the hustle and bustle of St. Helier.



For more info: Tel: (01534) 482818.

## The fastest growing tourist attraction in Jersey! Award winning and a favourite with families!

aMaizin! is a family run business which has fast become one of the most popular family tourist attractions in Jersey since opening in 2001.

The many activities include Toboggan Run, Crazy Golf, 3 Go-Kart Tracks, aMaizin Barnyard, Maze Experience from 1st July, tractor rides, water pistol area and lots more - all included in your entrance fee! The average length of stay is over five hours especially in the height of the Summer so allow plenty of time and don't forget to bring a towel!

aMaizin! Craft opened in 2006 and has proved a popular addition. Situated outside the Maze and Adventure Park, there is no entrance fee to this area, only a small charge for craft activities.

Unlimited free parking and a great new "Snack Shack" offers good quality food.

aMaizin! Adventure Park opens 28th April and is open seven days a week (including bank holidays) 10 a.m. - 6 p.m.

aMaizin! Maze is an additional attraction to the Adventure Park at no extra cost and opens 1st July.

aMaizin! Craft is open Wednesday - Sunday in shoulder months and opens seven days a week during peak season. 10 a.m. - 5 p.m.

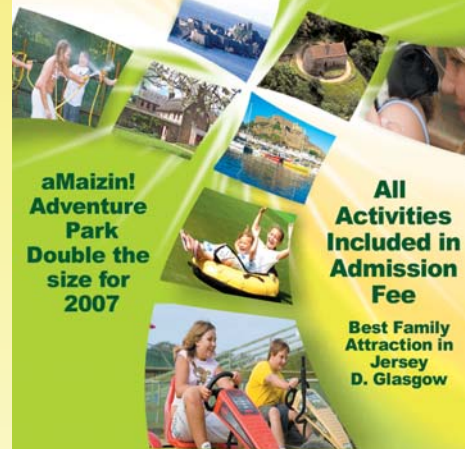
Bus Route 9, Easylink Route 55 and 66. Tel: 01534 482116 for further details or see [www.jerseyleisure.com](http://www.jerseyleisure.com) for regular updates.



## Tread The Hidden Path of Time

**Adventure Park Open April till Sept 10am - 6pm**  
(maze open July)

**aMaizin! Craft Open All Year**



**aMaizin! Adventure Park Double the size for 2007**

**All Activities Included in Admission Fee**

**Best Family Attraction in Jersey D. Glasgow**

# aMaizin!

Maze Adventure Park

La Hougue Farm, St Peter, Jersey  
Tel 01534 482116  
Bus Route 9 or Explorer  
[www.jerseyleisure.com](http://www.jerseyleisure.com)